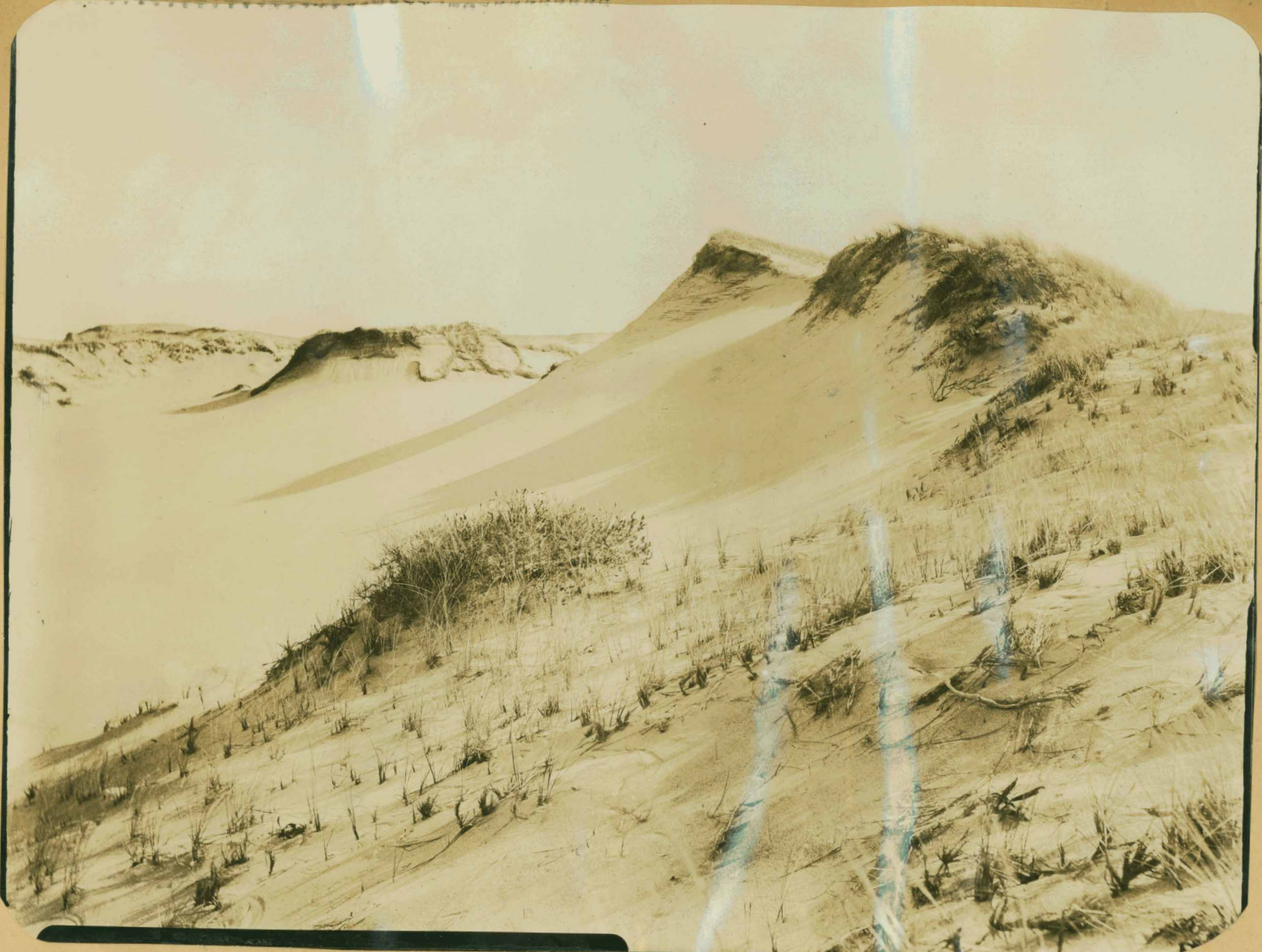


1870

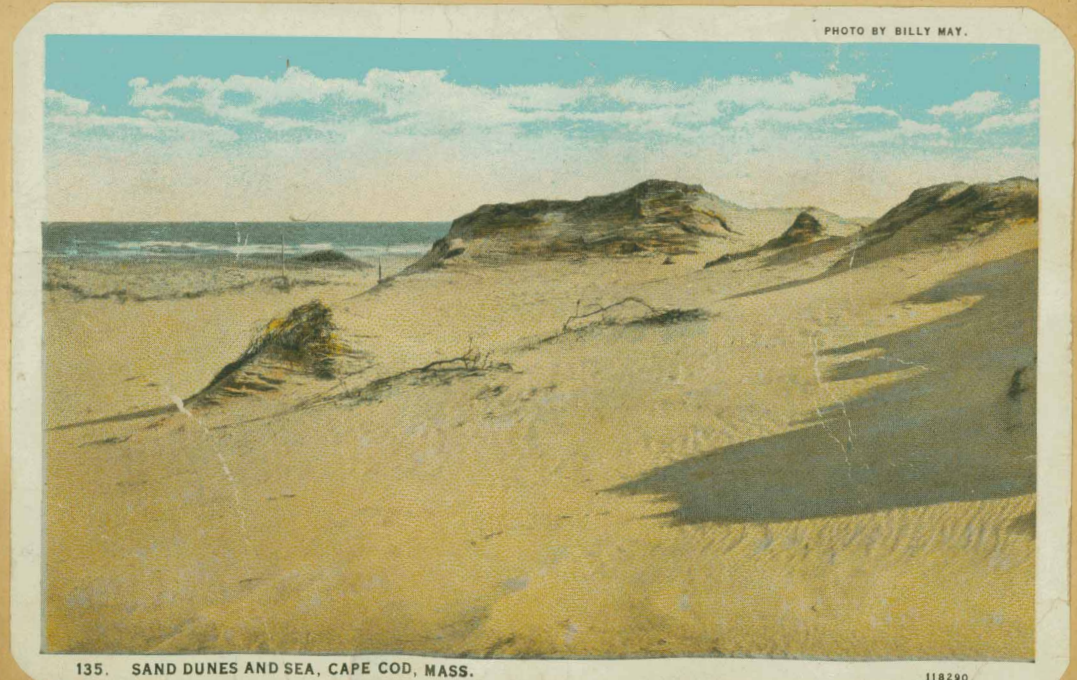


### First Painter Used Dunes as a Desert

PROVINCETOWN, May 14—Discovery by artists of Provincetown's "paintability" did not come all at once. A Boston painter named Marcus Waterman, pioneer in the discovery, first used Cape-end dunes as a double for the Sahara desert in the '80's and made the sandhills a background for models in Arab costume.

That spreading in vast patches over the dunes of the Lower Cape is reindeer moss—an Arctic lichen thriving in Summer heat on a landscape where no reindeer ever appeared to nibble on the growth which forms much of the animal's diet in the Far North?

Note this postcard was taken by Billy May Smith husband of Nancy Paine.



135. SAND DUNES AND SEA, CAPE COD, MASS.

118290