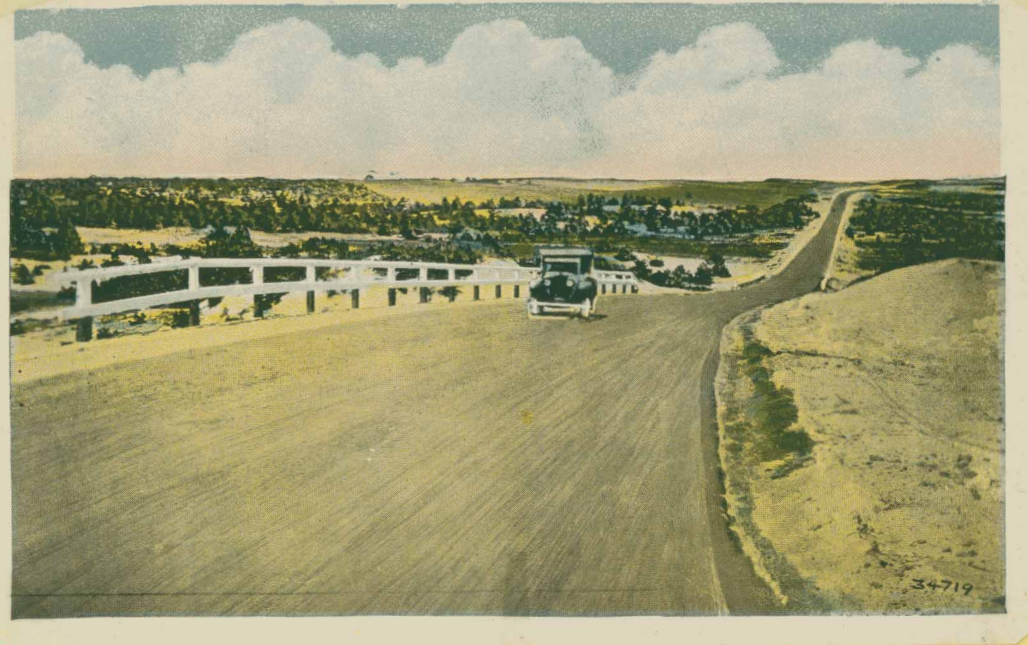
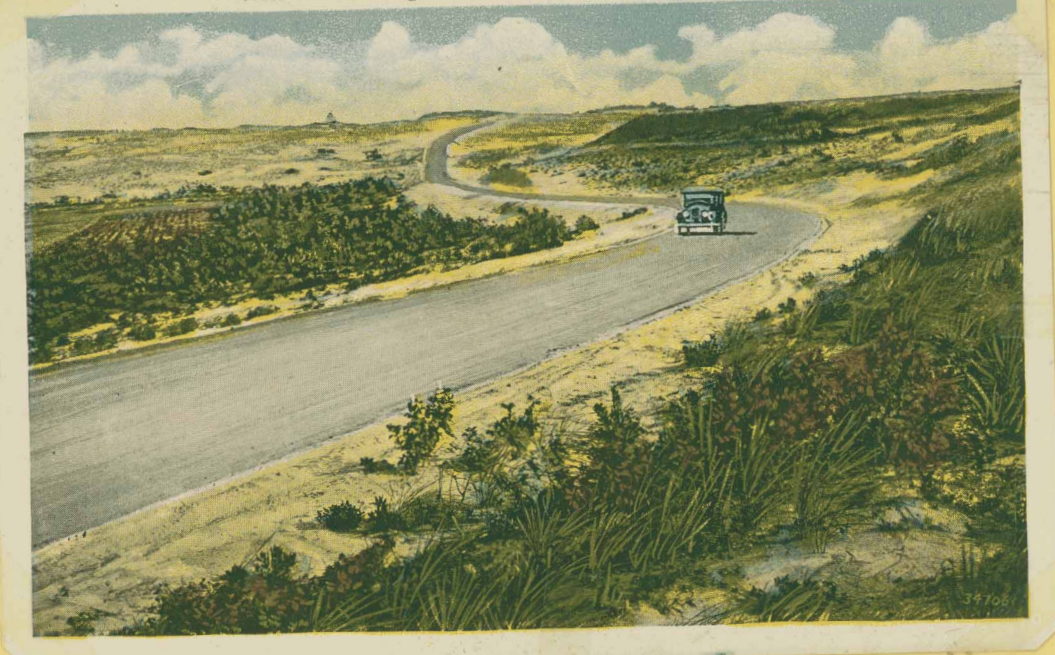


The New State Road through the Dunes at the Tip End of Cape Cod, Provincetown, Mass.

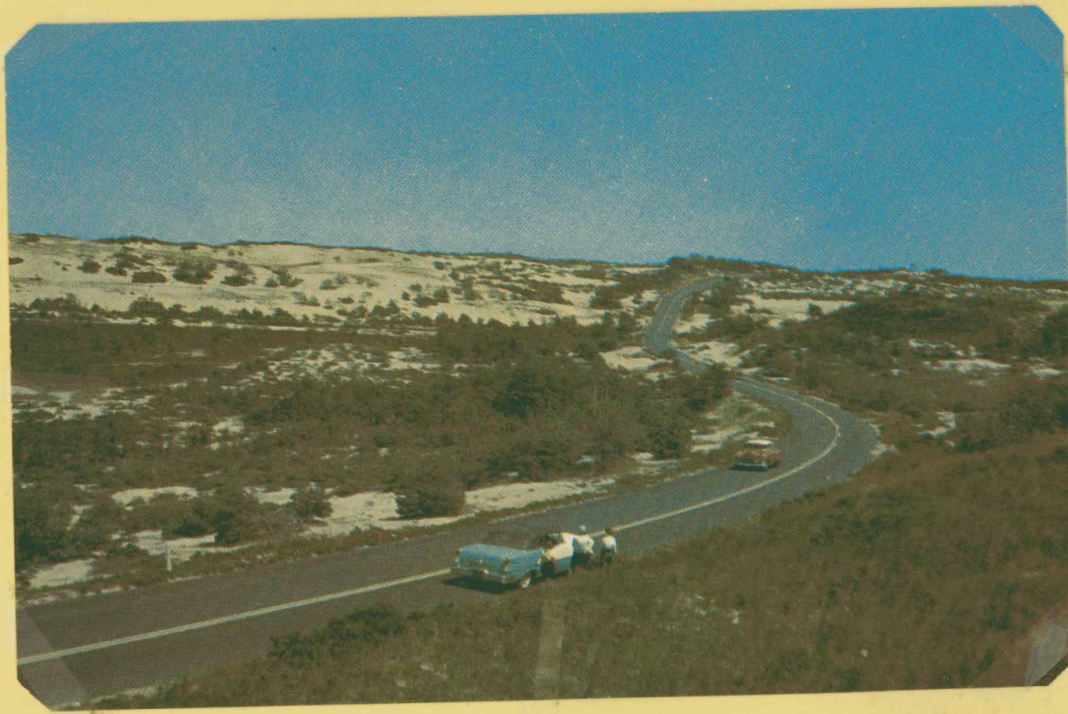


- 1930 -

New Road through the Dunes, Cape Cod, Provincetown, Mass.



- 1930 -



- 1955 -

OVER THE NEW STATE ROAD, TIP END OF CAPE COD, BEYOND PROVINCETOWN



- 1930 -