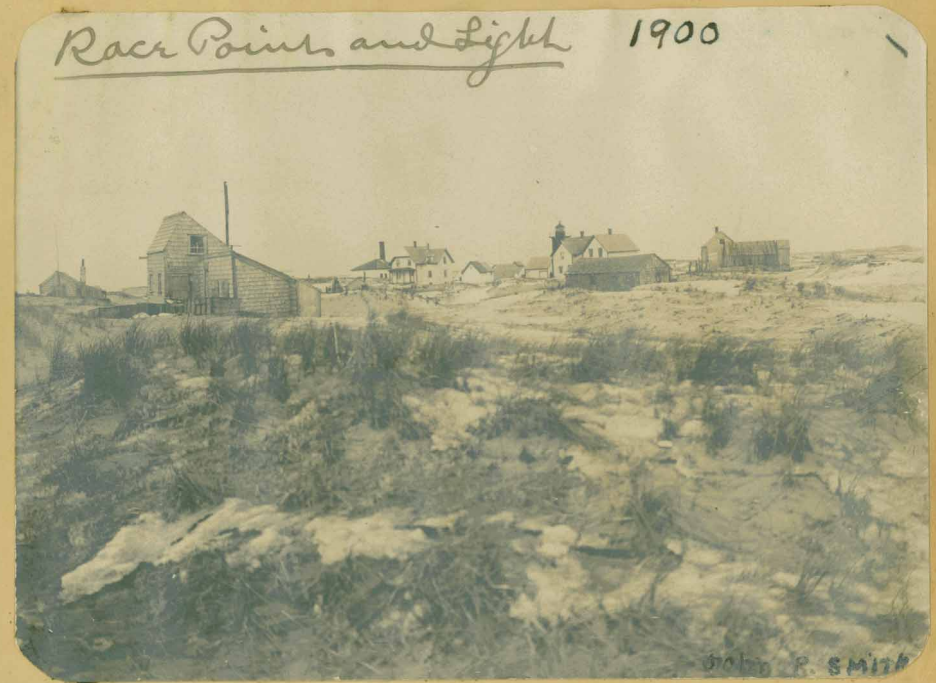


RACE POINT LIGHT

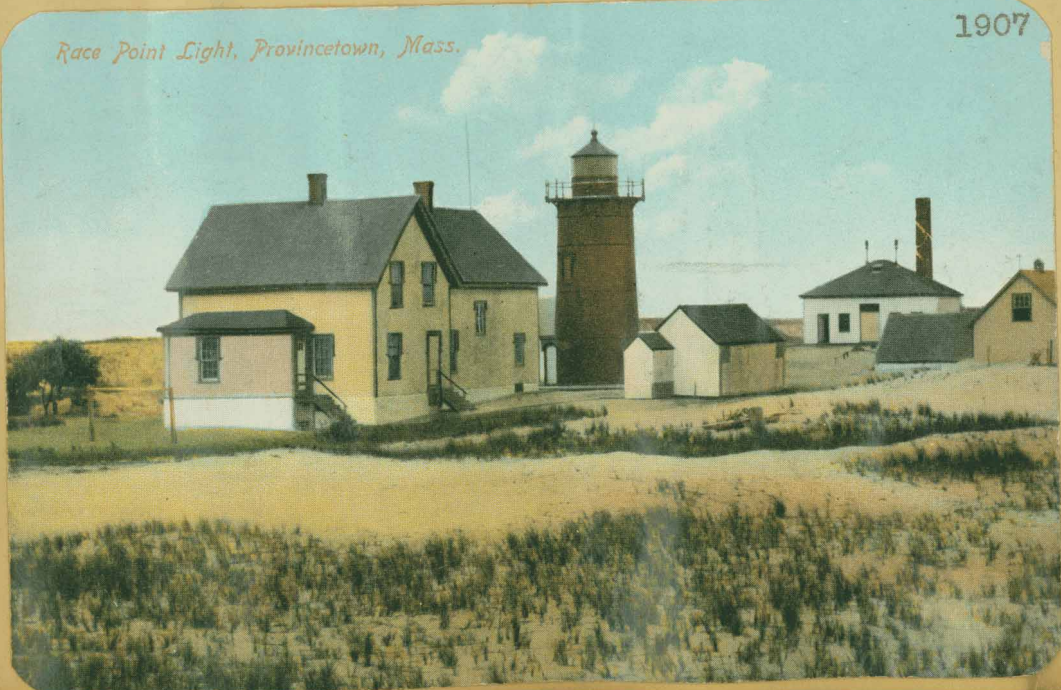
Old records state that there was at one time thirteen families at Race Point, and a schoolhouse was built for their use. The sum of \$50. was appropriated by the town for the support of that school each year.



Race Point Light, 1816: A lighthouse was built at Race Point in 1816 and later rebuilt in 1875. The present light is thirty feet in height, rates a 3,700 candle-power volume and shows a white flash of 1.3 seconds duration every 15 seconds! 41



Race Point and Light 1900



Race Point Light, Provincetown, Mass.

1907

The Original Lighthouse - Built 1816  
Seaweed in foreground.

July 2, 1873

A 12-inch steam whistle has been established at Race Point Light to be sounded in all thick weather, giving two blasts of four seconds duration, each, with intervals of eight seconds between them, followed by a pause of forty-four seconds.