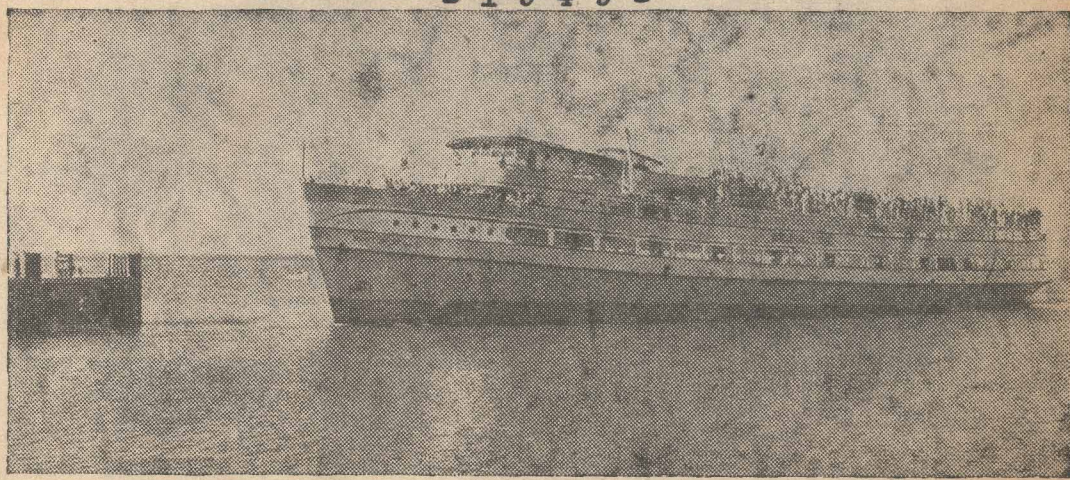




The Boston Belle from Sklaroff's Wharf - September 1952

TRAVEL BOSTON-CAPE END BY WATER

- 1949 -



Leave Cars and Cares Behind—Enjoy The Trip
aboard the Luxury Liner

BOSTON BELLE

ALL-STEEL, Ultra-Modern, stream-lined, 3,000 Passenger Capacity — Relaxing deck chairs — Complete Freedom Of Upper Deck — Radar Equipped
Sailing Daily from Foster's Wharf, 370 Atlantic Ave., Boston

Daily Schedule

Leave Boston 10 a. m.
Arrive Provincetown 1.30 p. m.
Leaves Provincetown 4:30 p. m.
Arrives Boston 8 p. m.

Sunday Schedule

via Plymouth every Sunday
Leave Boston 10 a. m.
Arrive Plymouth 12:30 p. m.
Leave Plymouth 1 p. m.
Arrive Provincetown 3 p. m.
Leave Provincetown 6 p. m.
Arrive Plymouth 8 p. m.
Arrive Boston 10 p. m.

RATES

Weekday, round trip, adult \$2.75
Weekday, round trip, child \$1.40
Weekday, one-way, adult \$1.50
Weekday, one-way, child .75
Sun., Hol., round trip, adult \$3.00
Sun., Hol., round trip, child \$1.50
Sun., Hol., one-way, adult \$1.75
Sun., Hol., one-way, child .90

(Round trip may be completed any time during the season)
Rates above include Federal Tax

Group Discount
And Charter Rates

FOR ALL INFORMATION
PHONE LIBERTY 2-1240

THE WILSON LINE



The Boston Belle from Sklaroff's - Sept. 1952