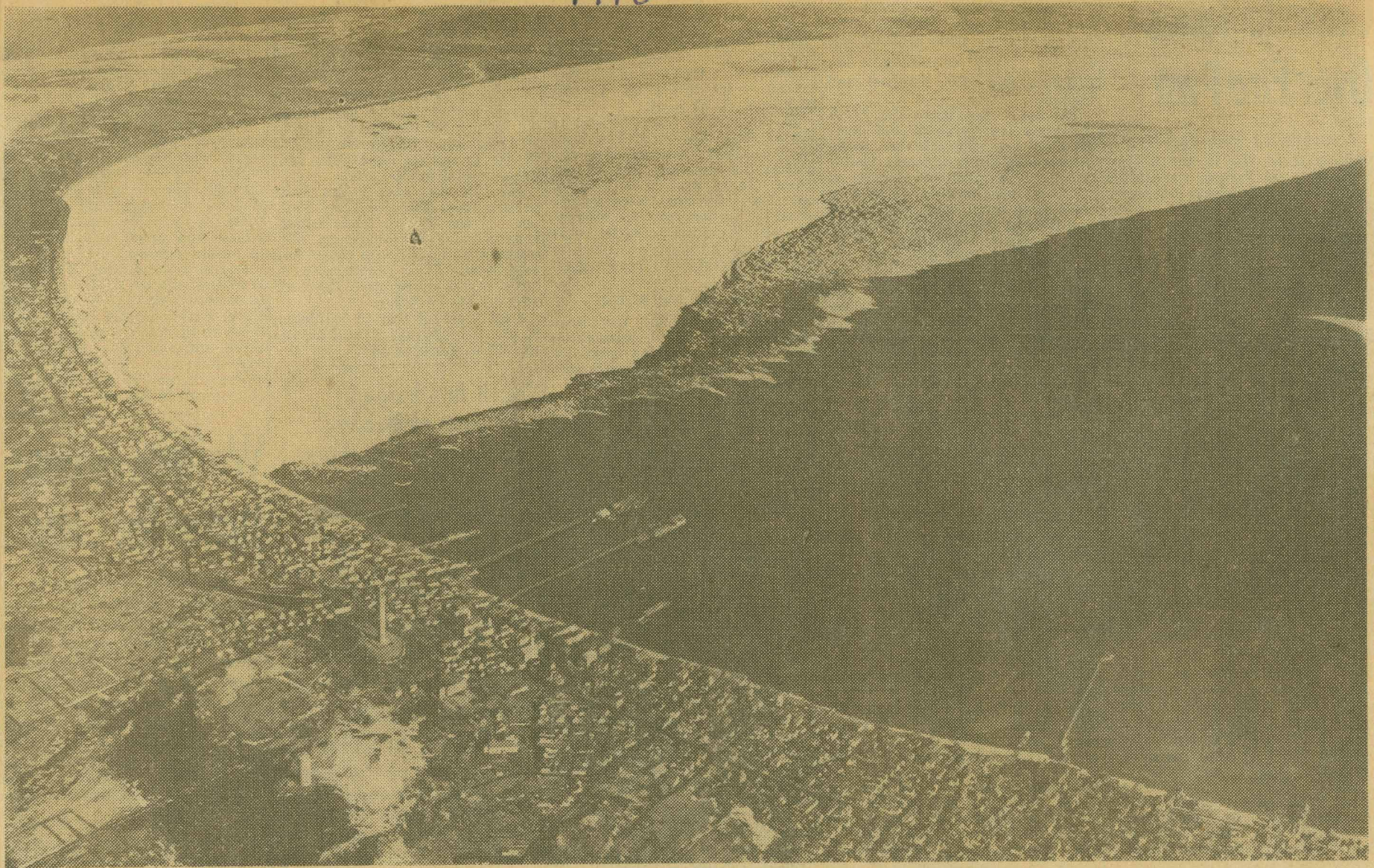


007-116
540

Ice Pack Jams Provincetown Harbor Before Breakup

-1948-



—Standard-Times Air Photo

Menacing Provincetown Harbor, the massive ice field which threatened \$1,000,000 damage to beachfront property and businesses is shown only 300 yards from Town Wharf and Long Point Light across the harbor from the wharf. The ice field stood as a threat to the harbor for several days. Hugging the

shore from Provincetown to Eastham, the ice held fast until a west wind drove it away from the harbor today. This photo shows a fish pier surrounded by the ice cakes. Town Wharf, nearest the camera, was expected to feel the crush of the ice if the saving wind had not risen in time.

* * *

Ice Pack Shift at Provincetown Removes Threat

PROVINCETOWN, Feb. 19—The week-old threat to Provincetown and nearby Cape Cod communities from a high ice pack is "definitely over," CBM William Costa of the Race Point Coast Guard station reported tonight.

Shift of a brisk wind from the southwest into the northwest has

moved almost all of the ice out of Provincetown Harbor and beyond Long's Point into Massachusetts Bay, Costa said.

Movement of the floes was accelerated by almost 12 hours of ice-breaking operations conducted by the Coast Guard cutter Ojibwa. The Ojibwa plowed zig-zag paths back and forth through Provincetown Harbor and over much of the seven-mile-wide pack.

Provincetown town officials said the near disaster has emphasized the need of a breakwater to protect the harbor. Officials said they will seek an early conference with Gov. Bradford.