



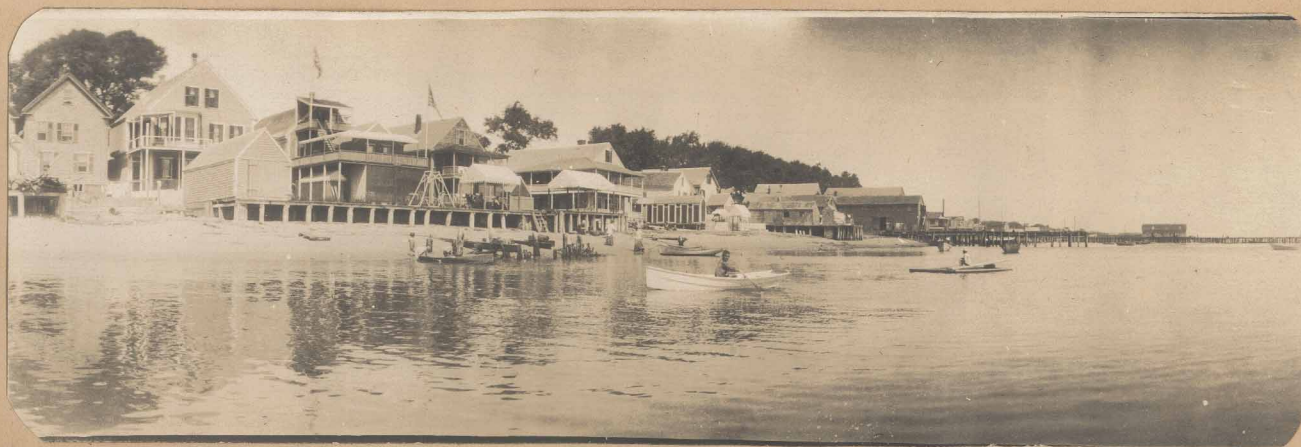
This is second house east of Kiley Lane. Peter Hunt's house, left. Maria Rich's Uncle Elisha Rich sitting on the steps.  
Note changes in same house below.  
(- About 1910 -)



On the beach in front of house in preceding picture. People unknown. Little old lady is same one as sitting on steps. - About 1900.



Same house as above taken September 1952



Facing East from scene above. Kibbie Cook Wharf, first, and Eastern Cold Storage on the right. Taken about 1910