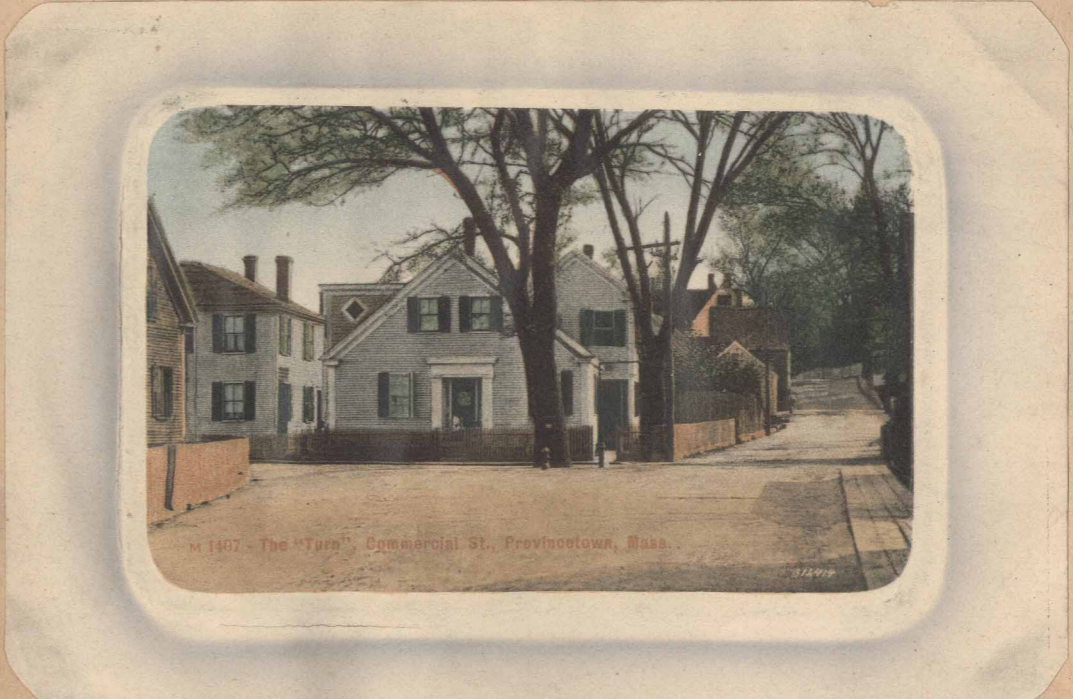




From Franklin Street (left) looking East. The square at The Turn. September 1949. The Cape Cod Cold Storage, 3rd from right, behind car. The A & P store, over the two cars on left. Note center where tree used to be. (See preceding pages.)



Same view as above - About 1900 - Note lovely elm Trees



Thr Turn - 1905 - Note the plank sidewalk.